



# PUTTING FIRE TO WORK FOR US

## The Challenge

Fire is a natural and important part of the landscape of Colorado's Front Range. However, the threat of large, severe fires, like the wildfires of 2020, are putting our forests at risk of long-term damage or loss. **The pace and scale of prescribed fire treatments are not keeping up with these threats**, despite forest and fire managers working to reduce flammable fuel loads and restore forest conditions for the past two decades through mechanical, manual, and prescribed fire methods.

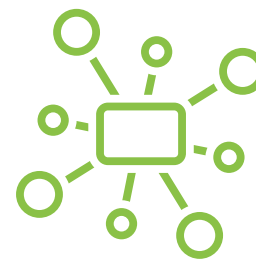
## The Solution

**The Northern Colorado Fireshed Collaborative (NCFC)** - a network of individuals and organizations representing a broad range of perspectives, expertise, experiences, and capacities - are collaborating to increase the frequency and area of prescribed fire **to make our forests resilient, protect communities and keep our water supplies reliable.**

## NCFC's Mission

To increase the pace and scale of not only mechanical and manual fuel reduction methods, but also prescribed fires and strategically managed wildland fires across jurisdictional boundaries.

## We are working to:



**Build a network** of organizations to collaboratively identify strategic areas and plan Fireshed efforts.

**Increase understanding** of, and support for, active wildland fire risk management activities at the landscape scale.



Identify, cultivate, and sustain **diverse funding sources** to support implementation.

Coordinate and build local capacity to **implement prescribed fire and other treatments** at landscape scales.



# What does success look like in our Fireshed?



Conduct **analysis, planning and outreach** to facilitate managing wildfires for ecological benefit when conditions allow.



Increase local capacity for **prescribed fire**, including staffing, agreements & funding, that results in more acreage treated.



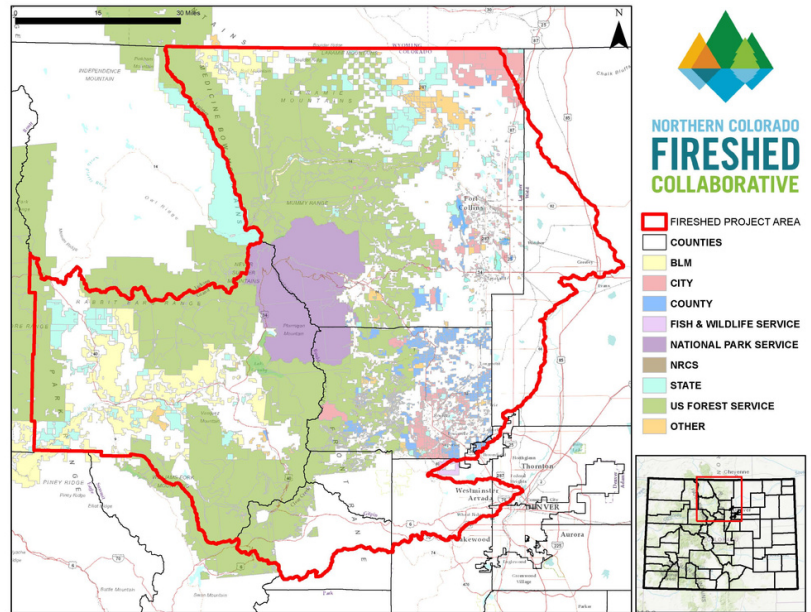
Treat **20% of the strategic, priority areas** using a combination of mechanical, manual, and prescribed fire treatments.

## What is a Fireshed?

A Fireshed is an area where social and ecological concerns regarding wildfire overlap and intertwine.

Wildfire moves across the land based on fuels, wind, and terrain and often moves in and out of drainages and watersheds.

To adapt to wildfire, we need to think and act at the scale of a wildfire - at the fireshed scale.



The NCFC spans the Front Range from the Wyoming border through the Clear Creek Watershed and west through Grand County.

Partnering across Northern Colorado's Front Range landscape to make our forests resilient, protect communities and keep our water supplies reliable. Learn more and get involved at [www.nocofireshed.org](http://www.nocofireshed.org).

